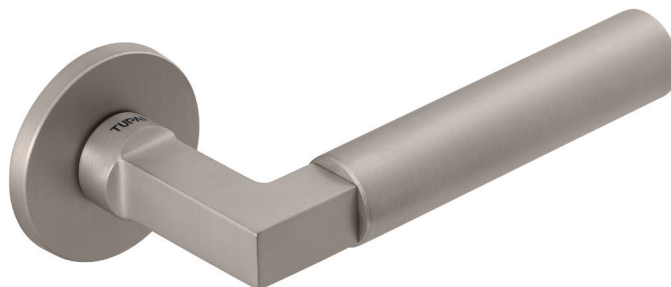
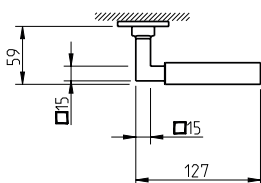
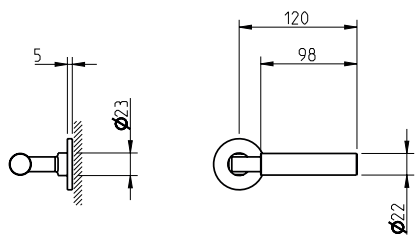


REF. 4071 5S



(01)  
latão polido brilhante  
polished brass



(03)  
cromado brilhante  
bright chrome



(96)  
cromado satinado  
satin chrome



(139)  
anti-alérgico (sem níquel)  
anti-allergic (nickel free)



(141)  
titan  
titan



(142)  
níquelado pérola  
nickel pearl



(153)  
preto pérola  
black pearl

### Descrição

Puxador par  
Adaptador metálico com sistema "click"  
Mola recuperadora reversível  
Ferro quadrado de 8x90mm  
Fixação da muleta com perno M6 oculto

### Description

Lever set  
Metallic mechanism with "click" system  
Reversible recovery spring  
8x90mm square spindle  
Handle fixed by a M6 grub screw

### Matéria Prima

Latão CW617N

### Raw Material

Latão CW617N

### Aplicação

Portas interiores com 30mm - 45mm espessura

### Application

Interior doors with 30mm - 45mm thick

### EN 1906

2	7	-	0	0	4	0	B
---	---	---	---	---	---	---	---

(acabamentos / finishes 01 - 03 - 153)

2	7	-	0	0	3	0	B
---	---	---	---	---	---	---	---

(acabamentos / finishes 139 - 141 - 142)

3	7	-	0	0	4	0	B
---	---	---	---	---	---	---	---

(acabamentos / finishes 96)